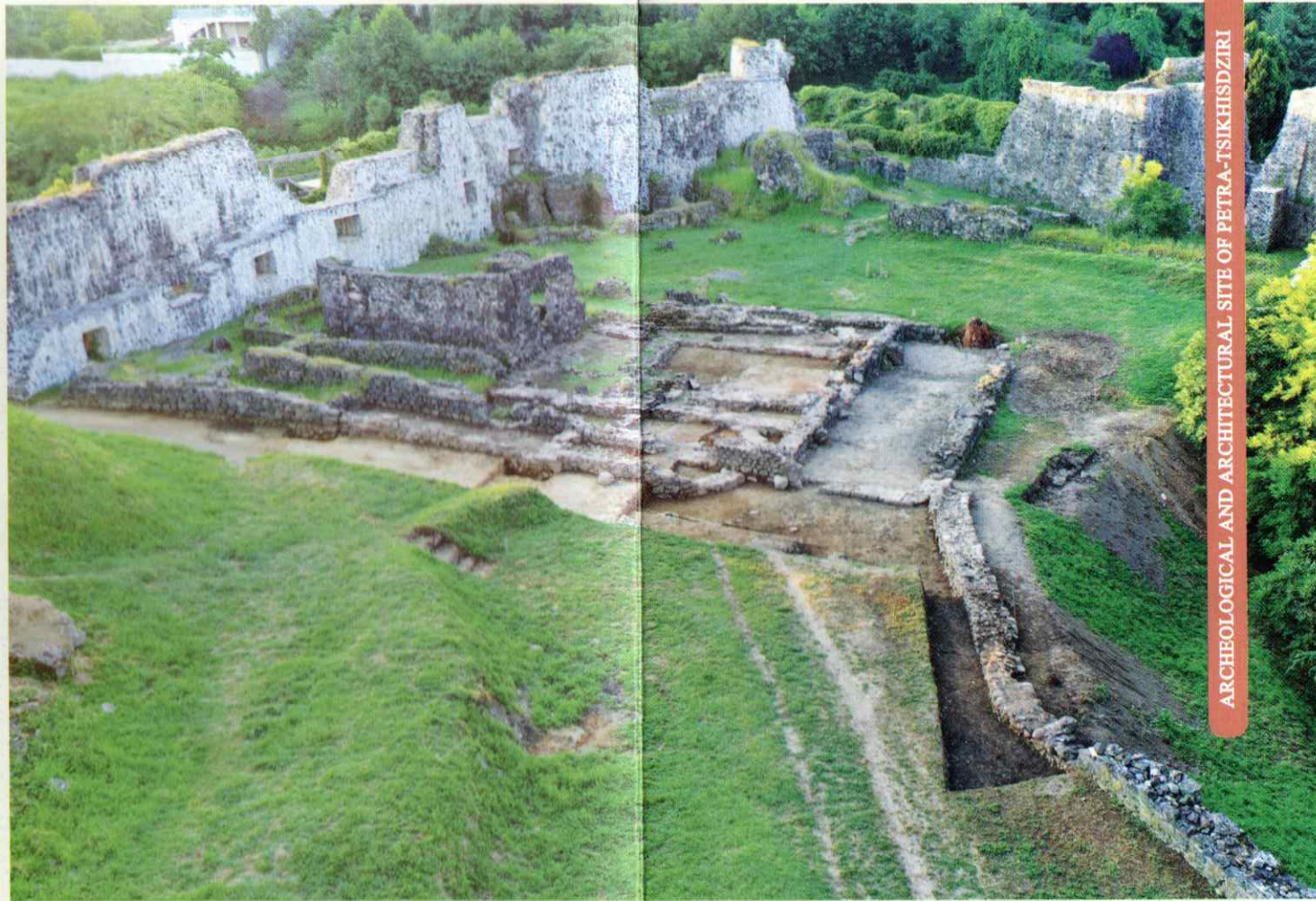
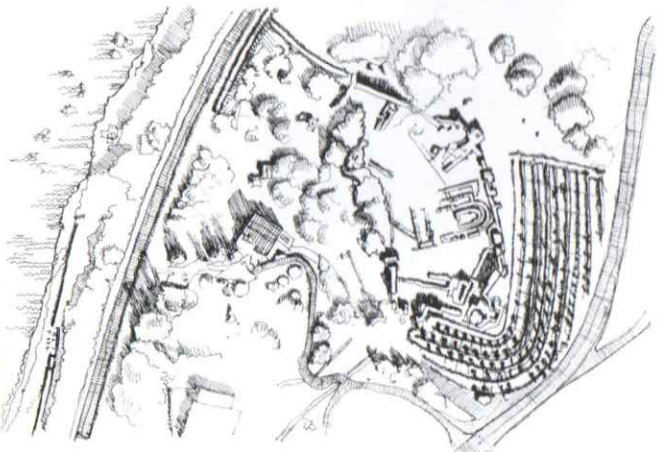


N
A



ARCHEOLOGICAL AND ARCHITECTURAL SITE OF PETRA - TSIKHISDZIRI

ARCHITECTURE OF PETRA FORTRESS

www.ajaraheritage.ge
info@ajaraheritage.ge

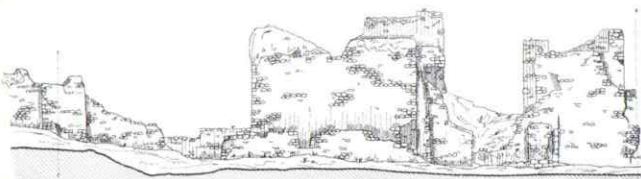
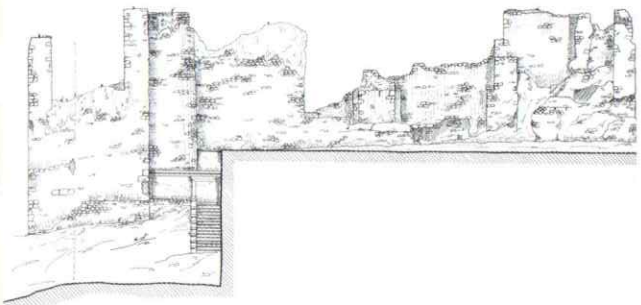
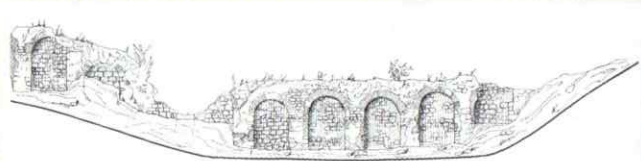
 პეტრას ციხე-სიმაგრე/Petra Fortress

აქარის კულტურული
მემკვიდრეობის
აგვის სააგენტო



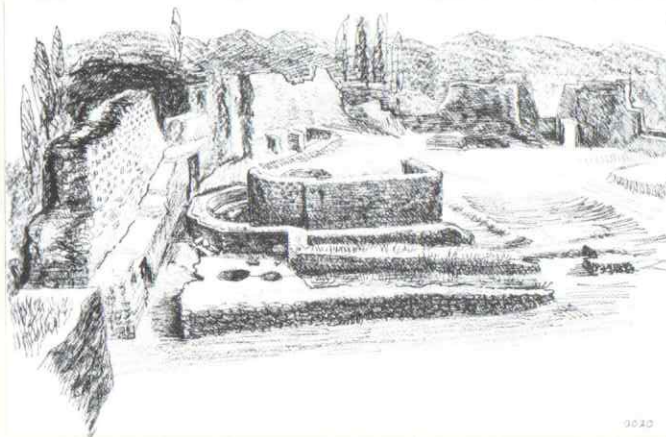
CULTURAL HERITAGE
PRESERVATION AGENCY
OF AJARA

Construction of the **walls of the fortress** is divided into two main periods: early medieval period and that of the presence of the Ottomans in the fortress. There is an early medieval gate in the north-east part of the citadel. Its arch is built with bricks and is buttressed on the east and the west. The east side of the northern masonry of the gate features an image of a cross with flared ends, which had been coated with lime by the Ottomans. Fortification structures situated on the northern hill are linked with the tower erected on the south-west hill with a double wall. The double wall dates to the sixth century, which is documented by the brick bands evidenced in the masonry and the archaeological material discovered in the area. The wall situated west of the double one is comparatively high and represents the main wall which has a gate arranged in its south-east part.

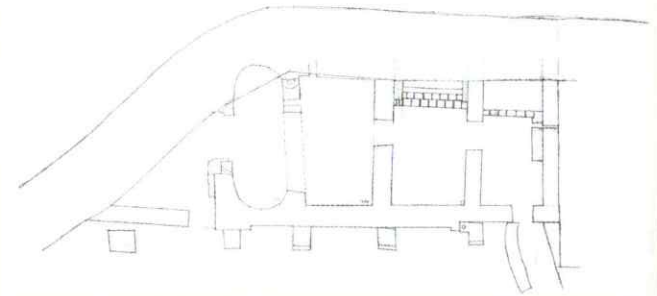


Church-site. The central part of the citadel has yielded remnants of churches of various periods. The most impressive is a three-nave basilica dated to the sixth century. It has large dimensions and

elongated proportions. Presently, only the bases of the supporting pillars have survived. The walls are built with unprocessed stone and mortar. The exterior of the apse is dressed in hewn stones of uniform size. Walls of an earlier construction which seem to be the remnants of the earliest church have been identified inside the south and central naves of the three-nave basilica, as well as outside the south nave. After the three-nave basilica was destroyed, a hall-type church with a semi-circular apse was built inside its central nave. There are pilasters inside the north and south wall. The church used to have two entrances: on the west and the south. The church generally dates to the tenth-eleventh centuries.



Bathhouse. The sixth -century bathhouse discovered in the center of the fortress is a structure of an elongated rectangular shape directed north-east. It comprises an enfilade of five compartments: a changing room, a cold room, a warm room, a hot room and a boiler room (dimensions: 9.2 x 6.5 m). The walls of the structure have survived at a height of 1.2 m. A portico is arranged along the western façade of the bathhouse. Presumably, the boiler room and the changing room were roofed with light wooden constructions, while the rest of the rooms were covered with vaults. After the bathhouse ceased to function, they arranged a wine cellar on the territory. The bathhouse and the three-nave basilica are contemporaneous constructions. They form parts of an integral composition.



Household facilities. The structure revealed in the south-east part of the citadel is contemporaneous with the basilica and the bathhouse. It is a 5-meter-long and 5-meter-wide structure directed east to west and divided into three parts by two transversal walls. The one-meter-wide walls are plastered with mortar inside. The structure in question could have been a storage for food. Another household facility is a construction arranged in the north-east corner of the curtain wall of the fortress. Its eastern part (with a mortared duct, walls and arched roof) is perfectly preserved. Presumably, the structure served as a reservoir for collecting rain water and had a specific function during the siege of the fortress.

